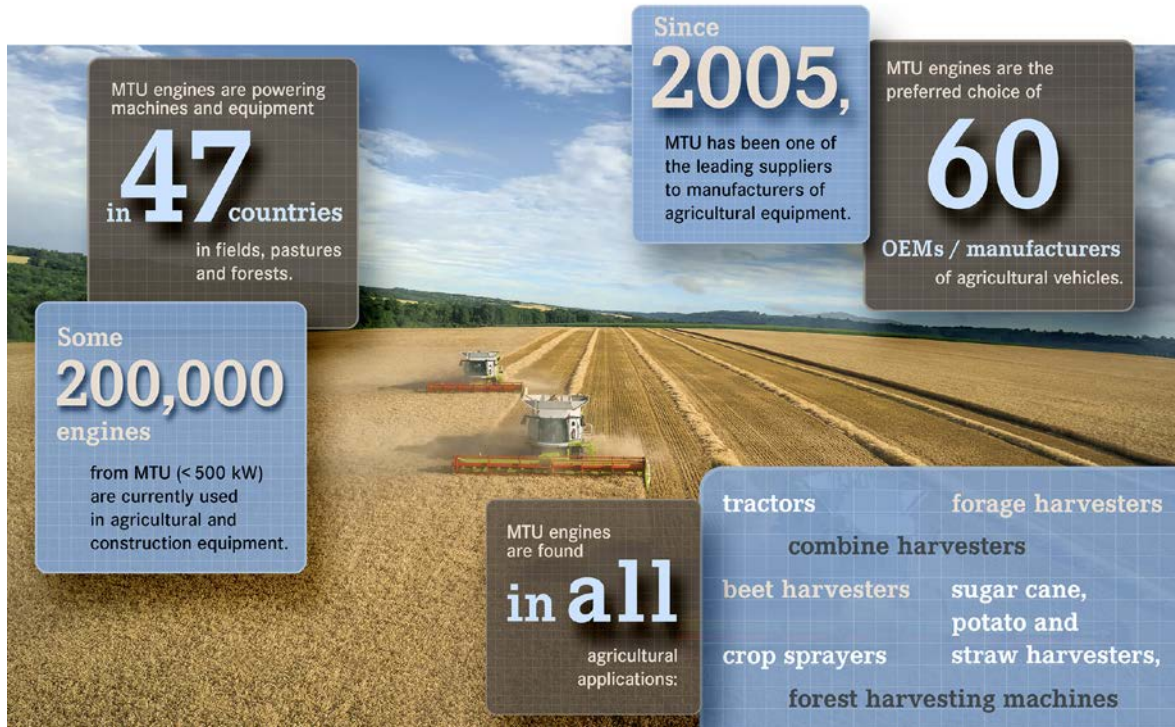




Power. Passion. Partnership.

MTU engines in the agricultural and forestry sector



Powerful, efficient and Stage V-ready: MTU engines in the agricultural and forestry sector

Since 2005, MTU has been one of the leading suppliers to manufacturers of agricultural equipment. MTU engines are currently selected of 60 OEM's/manufacturers of agricultural vehicles. About 200,000 engines from MTU (< 500 kW) are currently used worldwide in 47 countries in fields, forests and in construction areas. Whether they are installed in tractors, forage harvesters, combine harvesters or in harvesting machines for sugar cane, potatoes, beet and timber – the diesel engines from MTU ensure that these vehicles operate reliably, even in peak harvest periods and demonstrated that they are extremely robust and powerful.

Series 1000 to 1500 engines, which have been further developed by MTU and Daimler based on Daimler's commercial vehicle engines to comply with EU Stage V, will be available on the market as of June 2018. MTU supplies engines for the agricultural sector covering a power range extending from 75 to 480 kW. In addition to their reliability, cost effectiveness and environmental compatibility in particular are powerful arguments for customers in the agricultural and forestry sector. MTU engines have a reputation for low fuel consumption and low emissions. In addition, vehicle manufacturers and operators appreciate their high torque at low engine speed.

MTU is available for its customers worldwide – in partnership with Mercedes-Benz – via a dense service network. This also applies to special challenges, whatever their nature, because MTU engines comply with all requirements, even in special applications – from feed mixers to beet cleaner loaders.

Press photos are available for download from www.mtu-online.com/press

For further information please contact:

Silke Rockenstein
Rolls-Royce Power Systems AG
Phone: +49 7541 90-7740
E-mail: silke.rockenstein@rrpowersystems.com