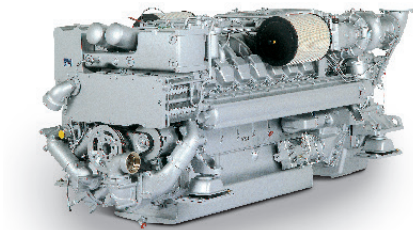




Marine

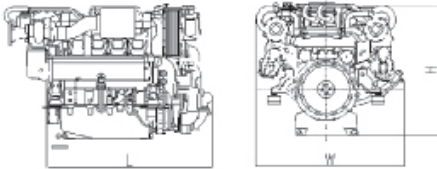
DIESEL ENGINE 16V 2000 M51A/B

for on-board power generation and diesel-electric drives
in continuous operation (3A)



| Engine | Dimensions (LxWxH) mm (in) | Mass, dry kg (lbs) |
|---------|---|--------------------|
| M51 A/B | 2525 x 1425 x 1290 (99.4 x 56.1 x 50.8) | 3200 (7055) |

Specifications are subject to change without notice. All dimensions are approximate, for complete information refer to installation drawing. For further information consult your MTU distributor/dealer.



Optional equipment and finishing shown. Standard may vary.

| Engine type | | 16V 2000 M51A 50 Hz | 16V 2000 M51B 60 Hz |
|------------------------------------|-----------|---------------------|---------------------|
| Rated power ICXN | kW | 664 | 800 |
| | (bhp) | (890) | (1073) |
| Speed | rpm | 1500 | 1800 |
| No. of cylinders | | 16 | 16 |
| Bore/stroke | mm (in) | 130/150 (5.1/5.9) | 130/150 (5.1/5.9) |
| Displacement, total | l (cu in) | 31.8 (1943) | 31.8 (1943) |
| Flywheel housing | | SAE O | SAE O |
| Exhaust optimization ¹⁾ | | IMO II | IMO II |
| Solas compliance | | Yes | Yes |

1) IMO – International Maritime Organisation (Marpol-convention)

| Performance & fuel consumption ¹⁾ | | 16V 2000 M51A | 16V 2000 M51B |
|--|-------|---------------|---------------|
| Speed | rpm | 1500 | 1800 |
| Maximum power | kW | 664 | 800 |
| | bhp | 890 | 1073 |
| 75% Power | kW | 498 | 600 |
| | bhp | 668 | 805 |
| Fuel consumption | g/kWh | 208 | 207 |
| | l/h | 124.4 | 149.1 |
| | gal/h | 32.8 | 39.4 |

1) Tolerance +5% per ISO 3046, Diesel fuel to DIN EN 590 with a min L.H.V. of 42800 kJ/kg (18390 BTU/lb)
All pumps necessary for engine operation included. Heat exchanger version without sea water pump: -2 g/kWh

| Standard equipment | |
|---------------------------------|---|
| Starting system | Electric starter 24 V |
| Auxiliary PTO | Charging generator, 140A, 28V, 2 pole |
| Oil system | Gear driven lube oil pump, lube-oil duplex filter with diverter valve, lube-oil heat exchanger, handpump for oil extraction |
| Fuel system | Fuel feed pump, fuel pre-filter, fuel main filter with diverter valve, on-engine fuel oil cooler, leak-off tank level monitored |
| Cooling system | Coolant-to-raw water plate core heat exchanger, self priming centrifugal raw water pump, gear driven coolant circulation pump |
| Combustion air system | Turbocharging with 2 water-cooled exhaust-gas turbochargers, on-engine intake air filters |
| Exhaust system | Triple-walled, liquid-cooled, on-engine exhaust manifolds, twin exhaust outlet, exhaust bellows horizontal discharge, SOLAS Kit |
| Mounting system | Resilient mounts at free end and driving end |
| Electronics and instrumentation | Engine and gearbox control and monitoring system (MDEC) |

| Optional equipment | |
|-----------------------------|---|
| Starting system | Pneumatic starter |
| Fuel oil system | Duplex fuel prefilter, fuel conditioning system |
| Cooling System | Coolant preheating system, integr. seawater gearbox piping |
| Exhaust System | Exhaust bellows vertical discharge |
| Engine Management System | In compliance with Classification Society Regulations (EMU + MEU) |
| Monitoring / Control System | genoline |
| Power Transmission | Torsionally resilient coupling |

Reference conditions:
> Power definition according ISO 3046
> Intake air temperature 25°C/Sea water temperature 25°C
> Intake air depression 15 mbar/Exhaust back pressure 30 mbar
> Barometric pressure 1000 mbar