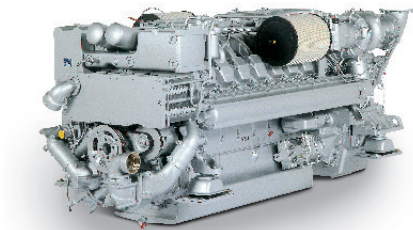




Marine

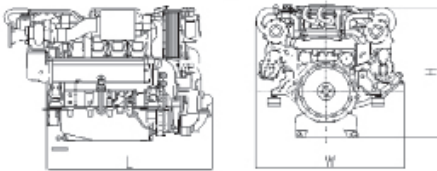
DIESEL ENGINE 16V 2000 M41A/B

for on-board power generation and diesel-electric drives
in continuous operation (3B)



| Engine | Dimensions (LxWxH) mm (in) | Mass, dry kg (lbs) |
|---------|---|--------------------|
| M41 A/B | 2525 x 1425 x 1290 (99.4 x 56.1 x 50.8) | 3200 (7055) |

Specifications are subject to change without notice. All dimensions are approximate, for complete information refer to installation drawing. For further information consult your MTU distributor/dealer.



Optional equipment and finishing shown. Standard may vary.

| Engine type | | 16V 2000 M41A 50 Hz | 16V 2000 M41B 60 Hz |
|------------------------------------|-----------|---------------------|---------------------|
| Rated power ICXN | kW | 770 | 930 |
| | (bhp) | (1033) | (1247) |
| Speed | rpm | 1500 | 1800 |
| No. of cylinders | | 16 | 16 |
| Bore/stroke | mm (in) | 130/150 (5.1/5.9) | 130/150 (5.1/5.9) |
| Displacement, total | l (cu in) | 31.8 (1943) | 31.8 (1943) |
| Flywheel housing | | SAE O | SAE O |
| Exhaust optimization ¹⁾ | | IMO II | IMO II |
| Solas compliance | | Yes | Yes |

1) IMO - International Maritime Organisation (Marpol-convention)

| Performance & fuel consumption ¹⁾ | | 16V 2000 M41A | 16V 2000 M41B |
|--|--------|---------------|---------------|
| Speed | rpm | 1500 | 1800 |
| Maximum power | kW | 770 | 930 |
| | bhp | 1033 | 1247 |
| 75% Power | kW | 578 | 698 |
| | bhp | 775 | 936 |
| Fuel consumption | g/kWh | 204 | 204 |
| at 75% power | l/hr | 141.6 | 170.9 |
| | gal/hr | 37.4 | 45.2 |

1) Tolerance +5% per ISO 3046, Diesel fuel to DIN EN 590 with a min L.H.V. of 42800 kJ/kg (18390 BTU/lb)
All pumps necessary for engine operation included. Heat exchanger version without sea water pump: -2 g/kWh

| Standard equipment | |
|---------------------------------|---|
| Starting system | Electric starter 24 V |
| Auxiliary PTO | Charging generator, 140A, 28V, 2 pole |
| Oil system | Gear driven lube oil pump, lube-oil duplex filter with diverter valve, lube-oil heat exchanger, handpump for oil extraction |
| Fuel system | Fuel feed pump, fuel pre-filter, fuel main filter with diverter valve, on-engine fuel oil cooler, leak-off tank level monitored |
| Cooling system | Coolant-to-raw water plate core heat exchanger, self priming centrifugal raw water pump, gear driven coolant circulation pump |
| Combustion air system | Turbocharging with 2 water-cooled exhaust-gas turbochargers, on-engine intake air filters |
| Exhaust system | Triple-walled, liquid-cooled, on-engine exhaust manifolds, twin exhaust outlet, exhaust bellows horizontal discharge, SOLAS Kit |
| Mounting system | Resilient mounts at free end and driving end |
| Electronics and instrumentation | Engine and gearbox control and monitoring system (MDEC) |

| Optional equipment | |
|-----------------------------|---|
| Starting system | Pneumatic starter |
| Fuel oil system | Duplex fuel prefilter, fuel conditioning system |
| Cooling System | Coolant preheating system, integr. seawater gearbox piping |
| Exhaust System | Exhaust bellows vertical discharge |
| Engine Management System | In compliance with Classification Society Regulations (EMU + MEU) |
| Monitoring / Control System | genoline |
| Power Transmission | Torsionally resilient coupling |

Reference conditions:

- > Power definition according ISO 3046
- > Intake air temperature 25°C/Sea water temperature 25°C
- > Intake air depression 15 mbar/Exhaust back pressure 30 mbar
- > Barometric pressure 1000 mbar