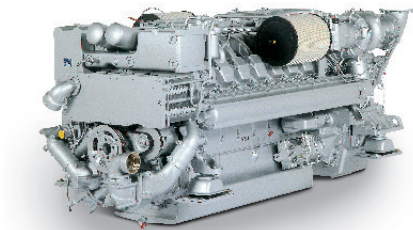




Marine

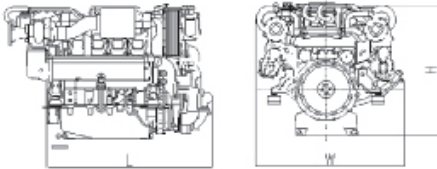
DIESEL ENGINE 16V 2000 M41A/B

for on-board power generation and diesel-electric drives
in continuous operation (3B)



Engine	Dimensions (LxWxH) mm (in)	Mass, dry kg (lbs)
M41 A/B	2525 x 1425 x 1290 (99.4 x 56.1 x 50.8)	3200 (7055)

Specifications are subject to change without notice. All dimensions are approximate, for complete information refer to installation drawing. For further information consult your MTU distributor/dealer.



Optional equipment and finishing shown. Standard may vary.

Engine type		16V 2000 M41A 50 Hz	16V 2000 M41B 60 Hz
Rated power ICXN	kW	770	930
	(bhp)	(1033)	(1247)
Speed	rpm	1500	1800
No. of cylinders		16	16
Bore/stroke	mm (in)	130/150 (5.1/5.9)	130/150 (5.1/5.9)
Displacement, total	l (cu in)	31.8 (1943)	31.8 (1943)
Flywheel housing		SAE O	SAE O
Exhaust optimization ¹⁾		IMO II	IMO II
Solas compliance		Yes	Yes

1) IMO - International Maritime Organisation (Marpol-convention)

Performance & fuel consumption ¹⁾		16V 2000 M41A	16V 2000 M41B
Speed	rpm	1500	1800
Maximum power	kW	770	930
	bhp	1033	1247
75% Power	kW	578	698
	bhp	775	936
Fuel consumption	g/kWh	204	204
	l/hr	141.6	170.9
	gal/hr	37.4	45.2

1) Tolerance +5% per ISO 3046, Diesel fuel to DIN EN 590 with a min L.H.V. of 42800 kJ/kg (18390 BTU/lb)
All pumps necessary for engine operation included. Heat exchanger version without sea water pump: -2 g/kWh

Standard equipment	
Starting system	Electric starter 24 V
Auxiliary PTO	Charging generator, 140A, 28V, 2 pole
Oil system	Gear driven lube oil pump, lube-oil duplex filter with diverter valve, lube-oil heat exchanger, handpump for oil extraction
Fuel system	Fuel feed pump, fuel pre-filter, fuel main filter with diverter valve, on-engine fuel oil cooler, leak-off tank level monitored
Cooling system	Coolant-to-raw water plate core heat exchanger, self priming centrifugal raw water pump, gear driven coolant circulation pump
Combustion air system	Turbocharging with 2 water-cooled exhaust-gas turbochargers, on-engine intake air filters
Exhaust system	Triple-walled, liquid-cooled, on-engine exhaust manifolds, twin exhaust outlet, exhaust bellows horizontal discharge, SOLAS Kit
Mounting system	Resilient mounts at free end and driving end
Electronics and instrumentation	Engine and gearbox control and monitoring system (MDEC)

Optional equipment	
Starting system	Pneumatic starter
Fuel oil system	Duplex fuel prefilter, fuel conditioning system
Cooling System	Coolant preheating system, integr. seawater gearbox piping
Exhaust System	Exhaust bellows vertical discharge
Engine Management System	In compliance with Classification Society Regulations (EMU + MEU)
Monitoring / Control System	genoline
Power Transmission	Torsionally resilient coupling

Reference conditions:

- > Power definition according ISO 3046
- > Intake air temperature 25°C/Sea water temperature 25°C
- > Intake air depression 15 mbar/Exhaust back pressure 30 mbar
- > Barometric pressure 1000 mbar